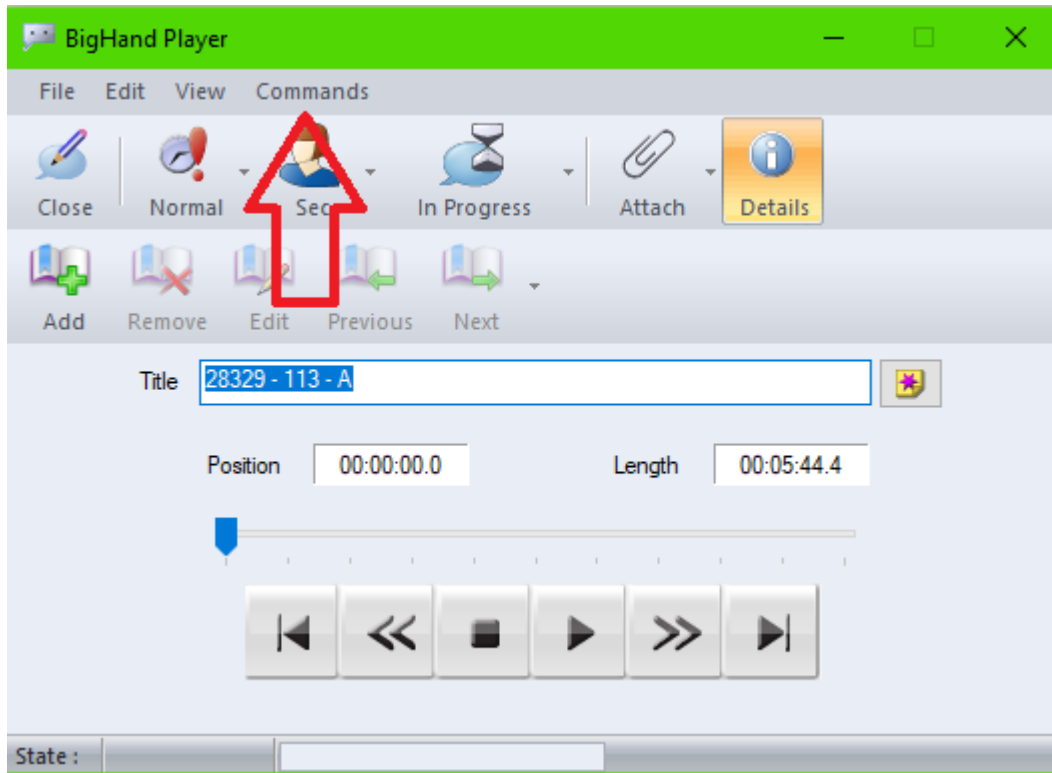


BigHand - How to use out of the office



This note outlines how to use BigHand out of the office without the need for headsets and pedals.

First, open BigHand as normal and click on the Commands tab.



The following box will appear to show you how to use your keyboard to operate BigHand.



HELP AND SUPPORT

For further help and support please contact the Learning Technology team.

**Last reviewed
18 March 2020**